



INDUSTRIAL AND DOMESTIC REVERSE OSMOSIS MEMBRANE VESSELS

PVC MEMBRANE HOUSINGS - STAINLESS STEEL MEMBRANE HOUSINGS

PVC MEMBRANE HOUSINGS

RO MEMBRANE HOUSINGS -RO VESSEL

Residential RO plastic membrane vessels 1812-2012



Item-Nr: **Description:**

ROVS2012PL01 Plastic RO Membrane vessel 1812/2012 150 psi

RO MEMBRANE HOUSINGS -RO VESSEL 3012

Residential RO plastic membrane vessels 3012



Item-Nr: **Description:**

ROVS300PL01 Plastic RO Membrane vessel 3012 200/300 GPD

RO MEMBRANE HOUSINGS -RO VESSEL 3213

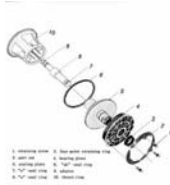
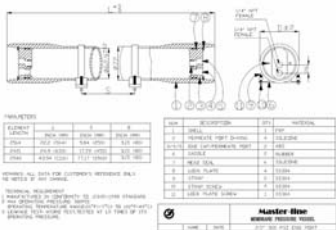
Residential RO plastic membrane vessels 3213



Item-Nr:	Description:
ROVS600PL01	Plastic RO Membrane vessel 3213 600 GPD

FRP MEMBRANE HOUSINGS ML NE2-V1 300 PSI END PORT

2,5" ML NE2-V1 300 PSI Series Pressure Membrane Housings End Port



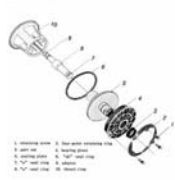
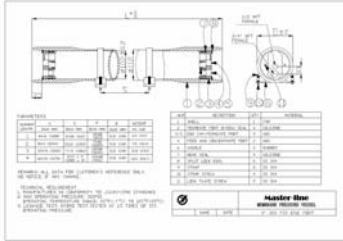
ML NE2-V1 Series - 2.5", Endport - Pressure (psi) : 300, Length: 21" and 40" single element
 Master-Line NE2-V1 series is specially designed for membranes separation applications such as pure water production. Master Line implements in-house program to assure quality product quality meets specification.
Features:
 - Smooth inner surface finishing for easy loading and unloading of membrane elements
 - End Port connection
 - Outer UV resistant polyurethane paint
 - Single head assembly to cut down spare parts cost
 - ISO9001: 2000 certification

Specifications:
 Available pressure rating (psi) 300,
 Length (single elements) 21" and 40"
 Shell Material FRP
 Shell Color White (other colors are available on request)
 Feed/reject port
 Size 3/8"
 Connection Female NPT/BSP
 Material ABS
 Permeate port
 Size 1.4"
 Connection Female NPT/BSP
 Material ABS Standard (Stainless steel option)
 Head assembly*1 Included
 Adaptor N/A
 Straps and saddles included
 Packaging PVC plastic wrapping with carton outer pack
 Max. operating Temp 50°C (122°F)
 Note: *1- Head assembly consists of halfmoon lock plates, ABS seal plate and lock nut, Head seal, permeate port o-ring. (cast Aluminum bearing plate only used in 1000 psi vessel)

Item-Nr:	Description:
MVN2521E03001MN	FRP Membrane vessel 2521 ML- NE2-P1 Series - End Port - 300 PSI - 1 element
MVN2540E03001MN	FRP Membrane vessel 2540 ML- NE2-P1 Series - End Port - 300 PSI - 1 element

4" FRP MEMBRANE HOUSINGS ML NE4-V2 300 PSI END PORT

4" ML"NE4-V2" END PORT 300 PSI Series Pressure Membrane Housings



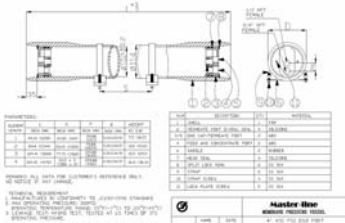
FRP 300 PSI model for application with pressure up to 300 psi and 1 to 4 membrane elements. ML NE2-V1 Series - 4", Endport - Pressure (psi) : 300, Length: 21"and 40" single element Master-Line NE2-V2 series is specially designed for membranes separation applications such as pure water production. Master Line implements in-house program to assure quality product quality meets specification. Features: - Smooth inner surface finishing for easy loading and unloading of membrane elements
 - End Port connection - Outer UV resistant polyurethane paint
 - Single head assembly to cut down spare parts cost
 - ISO9001: 2000 certification

Specifications: End Entry Side Entry Available pressure rating (psi) 250/300/450/1200 Length (No. of elements) 1 to 4
 Shell Material FRP Shell Color White (other colors are available on request)
 Feed/reject port Size 0.5"0.75" 0.5"/0.75"/1"
 Connection Female NPT/BSP Groove
 Material ABS S304 (SS 316 for 1000 psi)
 Permeate port Size 0.5" Connection Female NPT/BSP
 Material ABS Standard (Stainless steel option)
 Head assembly*1 Included Adaptor*2 N/A included
 Straps and saddles included Packaging PVC plastic wrapping with carton outer pack Max. operating Temp 50°C (122°F)
 Note: *1- Head assembly consists of half moon lock plates, ABS seal plate and lock nut, Head seal, permeate port o-ring. (cast Aluminum bearing plate only used in 1000 psi vessel) *2 - 0.75" OD standard adaptor is provided for side entry vessel. Adaptors of different dimension are available on request.
 All specifications mentioned above are subject to change without prior notice
 Other

Item-Nr:	Description:
MVN4021E03001MN	FRP Membrane vessel 4021 ML NE4 Series - End Port - 300 PSI - 1 element
MVN4040E03001MN	FRP Membrane vessel 4040 NE4-V2 Series - End Port - 300 PSI - 1 element
MVN4040E03002MN	FRP Membrane vessel 4040 NE4-V2 Series - End Port - 300 PSI - 2 elements
MVN4040E03003MN	FRP Membrane vessel 4040 NE4-V2 Series - End Port - 300 PSI - 3 elements
MVN4040E03004MN	FRP Membrane vessel 4040 NE4-V2 Series - End Port - 300 PSI - 4 elements
MVNE4300EPACC	Spare parts and accessories ML NE4-V2 on request

4" FRP MEMBRANE HOUSINGS ML NE4-V2 450 PSI END PORT

4" ML"NE4-V2" END PORT 450 PSI Series Pressure Membrane Housings



FRP 450 PSI model for application with pressure up to 450 psi and 1 to 4 membrane elements. RP 300 PSI model for application with pressure up to 300 psi and 1 to 4 membrane elements. ML NE2-V2 Series - 4", Endport - Pressure (psi) : 450, Length: 21" and 40" single element Master-Line NE2-V2 450 PSI series is specially designed for membranes separation applications such as pure water production. Master Line implements in-house program to assure quality product quality meets specification.

Features:

- Smooth inner surface finishing for easy loading and unloading of membrane elements
- End Port connection
- Outer UV resistant polyurethane paint
- Single head assembly to cut down spare parts cost
- ISO9001: 2000 certification

Specifications: End Entry Side Entry Available pressure rating (psi) 250/300/450/1000

Length (No. of elements) 1 to 4

Shell Material FRP

Shell Color White (other colors are available on request)

Feed/reject port

Size 0.5"0.75" 0.5"/0.75"/1"

Connection Female NPT/BSP Groove

Material ABS S304 (SS 316 for 1000 psi)

Permeate port

Size 0.5"

Connection Female NPT/BSP

Material ABS Standard (Stainless steel option)

Head assembly*1 Included

Adaptor*2 N/A included

Straps and saddles included

Packaging PVC plastic wrapping with carton outer pack

Max. operating Temp 50°C (122°F)

Note: *1- Head assembly consists of half moon lock plates, ABS seal plate and lock nut, Head seal, permeate port o-ring. (cast Aluminum bearing plate only used in 1000 psi vessel) *2 – 0.75" OD

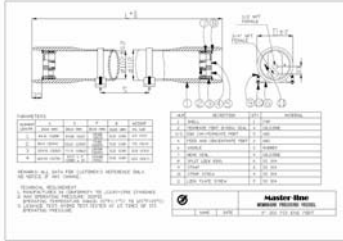
standard adaptor is provided for side entry vessel. Adaptors of different dimension are available on request.

All specifications mentioned above are subject to change without prior notice Other

Item-Nr:	Description:
MVN4040E04501MN	FRP Membrane vessel 4040 NE4 Series - End Port - 450 PSI - 1 element
MVN4040E04502MN	FRP Membrane vessel 4040 NE4 Series - End Port - 450 PSI - 2 elements
MVN4040E04503MN	FRP Membrane vessel 4040 NE4 Series - End Port - 450 PSI - 3 element
MVN4040E04504MN	FRP Membrane vessel 4040 NE4 Series - End Port - 450 PSI - 4 element
MVN4040S04504MN	FRP Membrane vessel 4040 NE4-V2 Series - Side Port 180° - 450 PSI - 4 elements
MVNE4450EPACC	Spare parts and accessories ML NE4-V2 on request

4" FRP MEMBRANE HOUSINGS ML NE4-V2 300 PSI SIDE PORT

4" ML"NE4-V2" SIDE PORT 300 PSI Series Pressure Membrane Housings



FRP 300 PSI model for application with pressure up to 300 psi and 1 to 4 membrane elements. ML NE4-V1 Series - 4", Side Port - Pressure (psi) : 300,

Length: 21" and 40" single element Master-Line NE2-V2 series is specially designed for membranes separation applications such as pure water production.

Master Line implements in-house program to assure quality product quality meets specification.

Features:

- Smooth inner surface finishing for easy loading and unloading of membrane elements
- Side Port connection
- Outer UV resistant polyurethane paint
- Single head assembly to cut down spare parts cost
- ISO9001: 2000 certification

Specifications: End Entry Side Entry Available pressure rating (psi) 250/300/450/1000

Length (No. of elements) 1 to 4

Shell Material FRP

Shell Color White (other colors are available on request)

Feed/reject port

Size 0.5"0.75" 0.5"/0.75"/1"

Connection Female NPT/BSP Groove

Material ABS S304 (SS 316 for 1000 psi)

Permeate port

Size 0.5"

Connection Female NPT/BSP

Material ABS Standard (Stainless steel option)

Head assembly*1 Included

Adaptor*2 N/A included

Straps and saddles included

Packaging PVC plastic wrapping with carton outer pack

Max. operating Temp 50°C (122°F)

Note: *1- Head assembly consists of half moon lock plates, ABS seal plate and lock nut, Head seal, permeate port o-ring. (cast Aluminum bearing plate only used in 1000 psi vessel) *2 – 0.75" OD

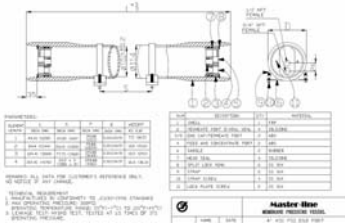
standard adaptor is provided for side entry vessel. Adaptors of different dimension are available on request.

All specifications mentioned above are subject to change without prior notice Other

Item-Nr:	Description:
MVN4040S03001MN	FRP Membrane vessel 4040 NE4-V2 Series - Side Port 180° - 300 PSI - 1 element
MVN4040S03002MN	FRP Membrane vessel 4040 NE4-V2 Series - Side Port 180° - 300 PSI - 2 elements
MVN4040S03003MN	FRP Membrane vessel 4040 NE4-V2 Series - Side Port 180° - 300 PSI - 3 elements
MVN4040S03004MN	FRP Membrane vessel 4040 NE4-V2 Series - Side Port 180° - 300 PSI - 4 elements
MVNE4300SPACC	Spare parts and accessories ML NE4-V2 on request

4" RP MEMBRANE HOUSINGS ML NE4-V2 450 PSI SIDE PORT

4" ML"NE4-V2" SIDE PORT 450 PSI Series Pressure Membrane Housings



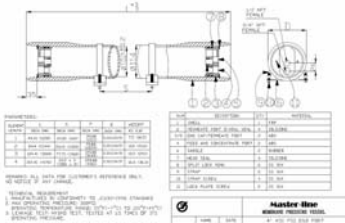
FRP 450 PSI model for application with pressure up to 450 psi and 1 to 4 membrane elements. ML NE2-V1 Series - 4", Side Port - Pressure (psi) : 450, Length: 21"and 40" single element Master-Line NE2-V2 series is specially designed for membranes separation applications such as pure water production. Master Line implements in-house program to assure quality product quality meets specification. Features: - Smooth inner surface finishing for easy loading and unloading of membrane elements - Side Port connection - Outer UV resistant polyurethane paint - Single head assembly to cut down spare parts cost - ISO9001: 2000 certification

Specifications: End Entry Side Entry Available pressure rating (psi) 250/300/450/1000
 Length (No. of elements) 1 to 4
 Shell Material FRP
 Shell Color White (other colors are available on request)
 Feed/reject port
 Size 0.5"0.75" 0.5"/0.75"/1"
 Connection Female NPT/BSP Groove
 Material ABS S304 (SS 316 for 1000 psi)
 Permeate port
 Size 0.5"
 Connection Female NPT/BSP
 Material ABS Standard (Stainless steel option)
 Head assembly*1 Included
 Adaptor*2 N/A included
 Straps and saddles included
 Packaging PVC plastic wrapping with carton outer pack
 Max. operating Temp 50°C (122°F)
 Note: *1- Head assembly consists of half moon lock plates, ABS seal plate and lock nut, Head seal, permeate port o-ring. (cast Aluminum bearing plate only used in 1000 psi vessel) *2 – 0.75" OD standard adaptor is provided for side entry vessel. Adaptors of different dimension are available on request.
 All specifications mentioned above are subject to change without prior notice
 Other

Item-Nr:	Description:
MVN4040S04501MN	FRP Membrane vessel 4040 NE4-V2 Series - Side Port 180° - 450 PSI - 1 element
MVN4040S04502MN	FRP Membrane vessel 4040 NE4-V2 Series - Side Port 180° - 450 PSI - 2 elements
MVN4040S04503MN	FRP Membrane vessel 4040 NE4-V2 Series - Side Port 180° - 450 PSI - 3 elements
MVNE4450SPACC	Spare parts and accessories ML NE4-V2 on request

4" FRP MEMBRANE HOUSINGS ML NE4-V2 1200 PSI SIDE PORT

4" ML "NE4-V2" SIDE PORT 1200 PSI Series Pressure Membrane Housings



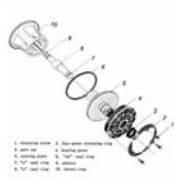
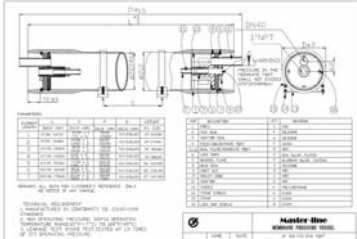
FRP 1200 PSI model for application with pressure up to 1200 psi and 1 to 4 membrane elements. ML NE2-V1 Series - 4", Side Port - Pressure (psi) : 1200, Length: 21" and 40" single element - Master-Line NE2-V2 series is specially designed for membranes separation applications such as pure water production. Master Line implements in-house program to assure quality product quality meets specification.
 Features: - Smooth inner surface finishing for easy loading and unloading of membrane elements - Side Port connection - Outer UV resistant polyurethane paint - Single head assembly to cut down spare parts cost - ISO9001: 2000 certification

Specifications: End Entry Side Entry Available pressure rating (psi) 250/300/450/1000
 Length (No. of elements) 1 to 4
 Shell Material FRP
 Shell Color White (other colors are available on request)
 Feed/reject port
 Size 0.5"0.75" 0.5"/0.75"/1"
 Connection Female NPT/BSP Groove
 Material ABS S304 (SS 316 for 1000 psi)
 Permeate port
 Size 0.5"
 Connection Female NPT/BSP
 Material ABS Standard (Stainless steel option)
 Head assembly*1 Included
 Adaptor*2 N/A included
 Straps and saddles included
 Packaging PVC plastic wrapping with carton outer pack
 Max. operating Temp 50°C (122°F)
 Note: *1- Head assembly consists of half moon lock plates, ABS seal plate and lock nut, Head seal, permeate port o-ring. (cast Aluminum bearing plate only used in 1000 psi vessel) *2 – 0.75" OD standard adaptor is provided for side entry vessel. Adaptors of different dimension are available on request.
 All specifications mentioned above are subject to change without prior notice
 Other

Item-Nr:	Description:
MVN4040S12001MN	FRP Membrane vessel 4040 NE4-V2 Series - Side Port 180° - 1200 PSI - 1 element (#)
MVN4040S12002MN	FRP Membrane vessel 4040 NE4-V2 Series - Side Port 180° - 1200 PSI - 2 elements
MVN4040S12003MN	FRP Membrane vessel 4040 NE4-V2 Series - Side Port 180° - 1200 PSI - 3 elements
MVN4040S12004MN	FRP Membrane vessel 4040 NE4-V2 Series - Side Port 180° - 1200 PSI - 4 elements (#)

8" FRP MEMBRANE HOUSINGS ML NE8-V3 300 PSI END PORT

8" ML "NE8" 300 PSI END PORT Series 300 PSI Pressure Membrane Housings



Master-Line NE8-V3 series membrane pressure vessel is available in both end entry and side entry configuration; pressure rating from 150 psi to 1200 psi and length from 1 through 7 membrane elements. Master-Line V-3 series is specially designed for membrane separation applications such as pure water production, wastewater treatment, water recycling and sea water desalination. The factory implements in house quality program to assure the product quality meets international standard such as ASME.

- Features: - Smooth inner surface finishing for easy loading and unloading of membrane elements
- Both end entry and side entry are available
- Different size of side port connection is available in Side entry vessels
- Outer polyurethane paint for VU resistant
- Head seal area is formed on the mandrel surface, therefore more accurate.
- The head seal is captured and does roll during installation of head assembly
- Down-stream conical shape thrust cone improve water flow pattern and allow installation of head assembly in any angle
- ISO9001:200 certification
- 100% hydro test at 1.5X operating pressure

Specifications: End Entry Side Entry Available pressure rating (psi) 150/250/300/450/600/800/1000/1200

Length (No. of elements) 1 to 7

Shell Material FRP

Shell Color White (other colors are available on request)

Feed/reject port

Size 1.5" /1.5"/2.0"/2.5"

Connection Groove end

Material SS316 (duplex SS for 1000 psi and above)

Permeate port

Size 1"

Connection Female NPT/BSP

Material ABS

Head assembly*1 Included

Adaptor*2 included

Straps and saddles included

Packaging*3 PVC plastic wrapping with carton outer pack

Max. operating Temp 50°C (122°F)

Note: *1- Head assembly consists of Retainer lock bars, cast Aluminum bearing plate, ABS seal plate and lock nut,

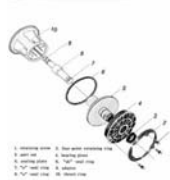
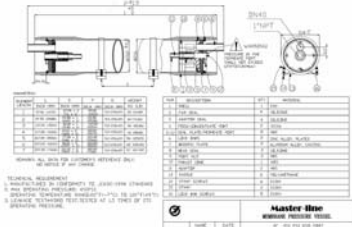
Head seal, permeate port o-ring. *2 – 0.125" OD Standard adaptor is provided. Adaptors of different dimension are available on request. *3" wooden crate for export packing.

All specifications mentioned above are subject to change without prior notice
Other information such as ordering guide and sales drawings are available

Item-Nr:	Description:
MVN8040E03001MN	FRP Membrane vessel 8040 NE8 Series - End Port - 300 PSI - 1 element
MVN8040E03002MN	FRP Membrane vessel 8040 NE8 Series - End Port - 300 PSI - 2 elements
MVN8040E03003MN	FRP Membrane vessel 8040 NE8 Series - End Port - 300 PSI - 3 elements
MVN8040E03004MN	FRP Membrane vessel 8040 NE8 Series - End Port - 300 PSI - 4 elements (#)
MVN8040E03005MN	FRP Membrane vessel 8040 NE8 Series - End Port - 300 PSI - 5 elements (#)
MVN8040E03006MN	FRP Membrane vessel 8040 NE8 Series - End Port - 300 PSI - 6 elements (#)
MVN8040E03007MN	FRP Membrane vessel 8040 NE8 Series - End Port - 300 PSI - 7 elements (#)
MVNE8300ACC	Spare parts and accessories ML NE8-V3- on request

8" FRP MEMBRANE HOUSINGS ML NE8-V3 450 PSI END PORT

8" ML "NE8" 450 END PORT PSI Series Pressure Membrane Housings



FRP 450 PSI model for application with pressure up to 450 psi and 1 to 8 membrane elements. Master-Line NE8-V3 series membrane pressure vessel is available in both end entry and side entry configuration; pressure rating from 150 psi to 1200 psi and length from 1 through 7 membrane elements.

Master-Line V-3 series is specially designed for membrane separation applications such as pure water production, wastewater treatment, water recycling and sea water desalination. The factory implements in house quality program to assure the product quality meets international standard such as ASME.

Features:

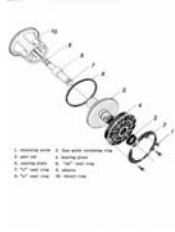
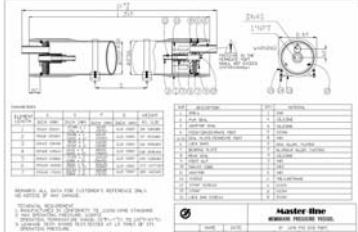
- Smooth inner surface finishing for easy loading and unloading of membrane elements
- Both end entry and side entry are available
- Different size of side port connection is available in Side entry vessels
- Outer polyurethane paint for VU resistant
- Head seal area is formed on the mandrel surface, therefore more accurate.
- The head seal is captured and does roll during installation of head assembly
- Down-stream conical shape thrust cone improve water flow pattern and allow installation of head assembly in any angle
- ISO9001:200 certification
- 100% hydro test at 1.5X operating pressure

Specifications: End Entry Side Entry
 Available pressure rating (psi) 150/250/300/450/600/800/1000/1200
 Length (No. of elements) 1 to 7
 Shell Material FRP
 Shell Color White (other colors are available on request)
 Feed/reject port
 Size 1.5" /1.5"/2.0"/2.5"
 Connection Groove end
 Material SS316 (duplex SS for 1000 psi and above)
 Permeate port
 Size 1"
 Connection Female NPT/BSP
 Material ABS
 Head assembly*1 Included
 Adaptor*2 included
 Straps and saddles included
 Packaging*3 PVC plastic wrapping with carton outer pack
 Max. operating Temp 50°C (122°F)
 Note: *1- Head assembly consists of Retainer lock bars, cast Aluminum bearing plate, ABS seal plate and lock nut,
 Head seal, permeate port o-ring. *2 – 0.125" OD Standard adaptor is provided. Adaptors of different dimension are available on request. *3" wooden crate for export packing.
 All specifications mentioned above are subject to change without prior notice
 Other information such as ordering guide and sales drawings are available

Item-Nr:	Description:
MVN8040E04501MN	FRP Membrane vessel 8040 NE8 Series - End Port - 450 PSI - 1 element
MVN8040E04502MN	FRP Membrane vessel 8040 NE8 Series - End Port - 450 PSI - 2 elements
MVN8040E04503MN	FRP Membrane vessel 8040 NE8 Series - End Port - 450 PSI - 3 elements
MVN8040E04504MN	FRP Membrane vessel 8040 NE8 Series - End Port - 450 PSI - 4 elements (#)
MVN8040E04505MN	FRP Membrane vessel 8040 NE8 Series - End Port - 450 PSI - 5 elements (#)
MVN8040E04506MN	FRP Membrane vessel 8040 NE8 Series - End Port - 450 PSI - 6 elements (#)
MVN8040E04507MN	FRP Membrane vessel 8040 NE8 Series - End Port - 450 PSI - 7 elements (#)
MVNE8450	Further models End Port - Side Port - 300 to 1200 PSI 1 to 7 elements on request
MVNE8450ACC	Spare parts and accessories ML NE8-V3- on request

8" FRP MEMBRANE HOUSINGS ML NE8-V3 1200 PSI END PORT

8" ML "NE8" 1200 PSI END PORT Series Pressure Membrane Housings



FRP 1200 PSI model for application with pressure up to 450 psi and 1 to 8 membrane elements. Master-Line NE8-V3 series membrane pressure vessel is available in both end entry and side entry configuration; pressure rating from 150 psi to 1200 psi and length from 1 through 7 membrane elements.

Master-Line V-3 series is specially designed for membrane separation applications such as pure water production, wastewater treatment, water recycling and sea water desalination. The factory implements in house quality program to assure the product quality meets international standard such as ASME.

Features:

- Smooth inner surface finishing for easy loading and unloading of membrane elements
- Both end entry and side entry are available
- Different size of side port connection is available in Side entry vessels
- Outer polyurethane paint for VU resistant
- Head seal area is formed on the mandrel surface, therefore more accurate.
- The head seal is captured and does roll during installation of head assembly
- Down-stream conical shape thrust cone improve water flow pattern and allow installation of head assembly in any angle
- ISO9001:200 certification
- 100% hydro test at 1.5X operating pressure

Specifications: End Entry Side Entry
 Available pressure rating (psi) 150/250/300/450/600/800/1000/1200
 Length (No. of elements) 1 to 7
 Shell Material FRP
 Shell Color White (other colors are available on request)
 Feed/reject port
 Size 1.5" /1.5"/2.0"/2.5"
 Connection Groove end
 Material SS316 (duplex SS for 1000 psi and above)
 Permeate port
 Size 1"
 Connection Female NPT/BSP
 Material ABS
 Head assembly*1 Included
 Adaptor*2 included
 Straps and saddles included
 Packaging*3 PVC plastic wrapping with carton outer pack
 Max. operating Temp 50°C (122°F)
 Note: *1- Head assembly consists of Retainer lock bars, cast Aluminum bearing plate, ABS seal plate and lock nut, Head seal, permeate port o-ring. *2 – 0.125" OD Standard adaptor is provided. Adaptors of different dimension are available on request. *3" wooden crate for export packing.
 All specifications mentioned above are subject to change without prior notice
 Other information such as ordering guide and sales drawings are available

Item-Nr:	Description:
MVN8040E12002MN	FRP Membrane vessel 8040 NE8 Series - End Port - 1200 PSI - 2 elements
MVN8040E12003MN	FRP Membrane vessel 8040 NE8 Series - End Port - 1200 PSI - 2 elements

STAINLESS STEEL MEMBRANE HOUSINGS

SS VESSEL

Pressure Membrane Housings in stainless steel



PRICE ON REQUEST

Item-Nr:	Description:
VS40211AS0425	RO Membrane vessel in 4021 1A in stainless steel AISI 304 250 psi
VS40401AS0425	RO Membrane vessel in 4040 1A in stainless steel AISI 304 250 psi
VS40402AS0425	RO Membrane vessel in 4040 2A in stainless steel AISI 304 250 psi
VSSVESSEK	RO Membrane vessel in stainless steel AISI 304 - for remaining dimensions and rating prices on request

