



## INDUSTRIAL AND DOMESTIC REVERSE OSMOSIS MEMBRANE VESSELS

PVC MEMBRANE HOUSINGS - STAINLESS STEEL MEMBRANE HOUSINGS

**PVC MEMBRANE HOUSINGS**

**RO MEMBRANE HOUSINGS -RO VESSEL**

Residential RO plastic membrane vessels 1812-2012



**Item-Nr:**                      **Description:**

ROVS2012PL01                      Plastic RO Membrane vessel 1812/2012 150 psi

**RO MEMBRANE HOUSINGS -RO VESSEL 3012**

Residential RO plastic membrane vessels 3012



**Item-Nr:**                      **Description:**

ROVS300PL01                      Plastic RO Membrane vessel 3012 200/300 GPD

**RO MEMBRANE HOUSINGS -RO VESSEL 3213**

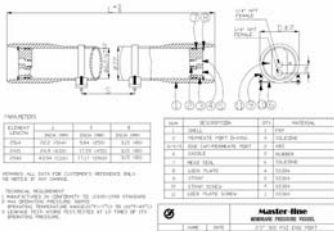
**Residential RO plastic membrane vessels 3213**



| Item-Nr:    | Description:                            |
|-------------|---|
| ROVS600PL01 | Plastic RO Membrane vessel 3213 600 GPD |

**FRP MEMBRANE HOUSINGS ML NE2-V1 300 PSI END PORT**

**2,5" ML NE2-V1 300 PSI Series Pressure Membrane Housings End Port**



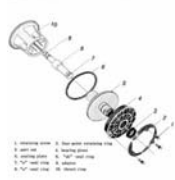
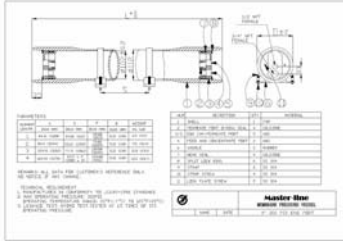
ML NE2-V1 Series - 2.5", Endport - Pressure (psi) : 300,  
 Length: 21" and 40" single element  
 NE2-V1 series is specially designed for membranes separation applications such as pure water production.  
 Master Line implements in-house program to assure quality product quality meets specification.  
**Features:**  
 - Smooth inner surface finishing for easy loading and unloading of membrane elements  
 - End Port connection  
 - Outer UV resistant polyurethane paint  
 - Single head assembly to cut down spare parts cost  
 - ISO9001: 2000 certification

**Specifications:**  
 Available pressure rating (psi) 300,  
 Length (single elements) 21" and 40"  
 Shell Material FRP  
 Shell Color White (other colors are available on request)  
 Feed/reject port  
 Size 3/8"  
 Connection Female NPT/BSP  
 Material ABS  
 Permeate port  
 Size 1.4"  
 Connection Female NPT/BSP  
 Material ABS Standard (Stainless steel option)  
 Head assembly\*1 Included  
 Adaptor N/A  
 Straps and saddles included  
 Packaging PVC plastic wrapping with carton outer pack  
 Max. operating Temp 50°C (122°F)  
 Note: \*1- Head assembly consists of halfmoon lock plates, ABS seal plate and lock nut, Head seal, permeate port o-ring. (cast Aluminum bearing plate only used in 1000 psi vessel)

| Item-Nr:        | Description:  |
|-----------------|---|
| MVN2521E03001MN | FRP Membrane vessel 2521 ML- NE2-P1 Series - End Port - 300 PSI - 1 element |
| MVN2540E03001MN | FRP Membrane vessel 2540 ML- NE2-P1 Series - End Port - 300 PSI - 1 element |

**4" FRP MEMBRANE HOUSINGS ML NE4-V2 300 PSI END PORT**

**4" ML"NE4-V2" END PORT 300 PSI Series Pressure Membrane Housings**



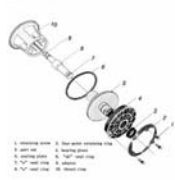
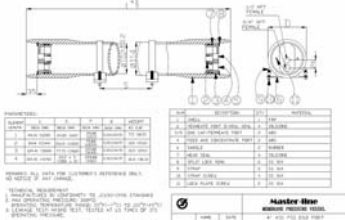
FRP 300 PSI model for application with pressure up to 300 psi and 1 to 4 membrane elements. ML NE2-V1 Series - 4", Endport - Pressure (psi) : 300, Length: 21"and 40" single element Master-Line NE2-V2 series is specially designed for membranes separation applications such as pure water production. Master Line implements in-house program to assure quality product quality meets specification. Features: - Smooth inner surface finishing for easy loading and unloading of membrane elements  
 - End Port connection - Outer UV resistant polyurethane paint  
 - Single head assembly to cut down spare parts cost  
 - ISO9001: 2000 certification

Specifications: End Entry Side Entry Available pressure rating (psi) 250/300/450/1200 Length (No. of elements) 1 to 4  
 Shell Material FRP Shell Color White (other colors are available on request)  
 Feed/reject port Size 0.5"0.75" 0.5"/0.75"/1"  
 Connection Female NPT/BSP Groove  
 Material ABS S304 (SS 316 for 1000 psi)  
 Permeate port Size 0.5" Connection Female NPT/BSP  
 Material ABS Standard (Stainless steel option)  
 Head assembly\*1 Included Adaptor\*2 N/A included  
 Straps and saddles included Packaging PVC plastic wrapping with carton outer pack Max. operating Temp 50°C (122°F)  
 Note: \*1- Head assembly consists of half moon lock plates, ABS seal plate and lock nut, Head seal, permeate port o-ring. (cast Aluminum bearing plate only used in 1000 psi vessel) \*2 - 0.75" OD standard adaptor is provided for side entry vessel. Adaptors of different dimension are available on request.  
 All specifications mentioned above are subject to change without prior notice  
 Other

| Item-Nr:        | Description:   |
|-----------------|--|
| MVN4021E03001MN | FRP Membrane vessel 4021 ML NE4 Series - End Port - 300 PSI - 1 element  |
| MVN4040E03001MN | FRP Membrane vessel 4040 NE4-V2 Series - End Port - 300 PSI - 1 element  |
| MVN4040E03002MN | FRP Membrane vessel 4040 NE4-V2 Series - End Port - 300 PSI - 2 elements |
| MVN4040E03003MN | FRP Membrane vessel 4040 NE4-V2 Series - End Port - 300 PSI - 3 elements |
| MVN4040E03004MN | FRP Membrane vessel 4040 NE4-V2 Series - End Port - 300 PSI - 4 elements |
| MVNE4300EPACC   | Spare parts and accessories ML NE4-V2 on request                         |

**4" FRP MEMBRANE HOUSINGS ML NE4-V2 450 PSI END PORT**

**4" ML"NE4-V2" END PORT 450 PSI Series Pressure Membrane Housings**



FRP 450 PSI model for application with pressure up to 450 psi and 1 to 4 membrane elements. RP 300 PSI model for application with pressure up to 300 psi and 1 to 4 membrane elements. ML NE2-V2 Series - 4", Endport - Pressure (psi) : 450, Length: 21" and 40" single element Master-Line NE2-V2 450 PSI series is specially designed for membranes separation applications such as pure water production. Master Line implements in-house program to assure quality product quality meets specification.

**Features:**

- Smooth inner surface finishing for easy loading and unloading of membrane elements
- End Port connection
- Outer UV resistant polyurethane paint
- Single head assembly to cut down spare parts cost
- ISO9001: 2000 certification

Specifications: End Entry Side Entry Available pressure rating (psi) 250/300/450/1000

Length (No. of elements) 1 to 4

Shell Material FRP

Shell Color White (other colors are available on request)

Feed/reject port

Size 0.5"0.75" 0.5"/0.75"/1"

Connection Female NPT/BSP Groove

Material ABS S304 (SS 316 for 1000 psi)

Permeate port

Size 0.5"

Connection Female NPT/BSP

Material ABS Standard (Stainless steel option)

Head assembly\*1 Included

Adaptor\*2 N/A included

Straps and saddles included

Packaging PVC plastic wrapping with carton outer pack

Max. operating Temp 50°C (122°F)

Note: \*1- Head assembly consists of half moon lock plates, ABS seal plate and lock nut, Head seal, permeate port o-ring. (cast Aluminum bearing plate only used in 1000 psi vessel) \*2 – 0.75" OD

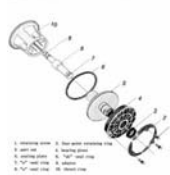
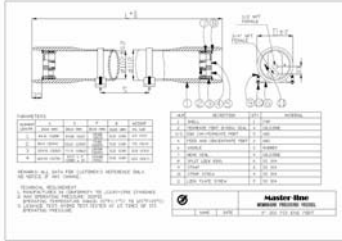
standard adaptor is provided for side entry vessel. Adaptors of different dimension are available on request.

All specifications mentioned above are subject to change without prior notice Other

| Item-Nr:        | Description:   |
|-----------------|--|
| MVN4040E04501MN | FRP Membrane vessel 4040 NE4 Series - End Port - 450 PSI - 1 element           |
| MVN4040E04502MN | FRP Membrane vessel 4040 NE4 Series - End Port - 450 PSI - 2 elements          |
| MVN4040E04503MN | FRP Membrane vessel 4040 NE4 Series - End Port - 450 PSI - 3 element           |
| MVN4040E04504MN | FRP Membrane vessel 4040 NE4 Series - End Port - 450 PSI - 4 element           |
| MVN4040S04504MN | FRP Membrane vessel 4040 NE4-V2 Series - Side Port 180° - 450 PSI - 4 elements |
| MVNE4450EPACC   | Spare parts and accessories ML NE4-V2 on request                               |

**4" FRP MEMBRANE HOUSINGS ML NE4-V2 300 PSI SIDE PORT**

**4" ML"NE4-V2" SIDE PORT 300 PSI Series Pressure Membrane Housings**



FRP 300 PSI model for application with pressure up to 300 psi and 1 to 4 membrane elements. ML NE4-V1 Series - 4", Side Port - Pressure (psi) : 300,

Length: 21" and 40" single element Master-Line NE2-V2 series is specially designed for membranes separation applications such as pure water production.

Master Line implements in-house program to assure quality product quality meets specification.

**Features:**

- Smooth inner surface finishing for easy loading and unloading of membrane elements
- Side Port connection
- Outer UV resistant polyurethane paint
- Single head assembly to cut down spare parts cost
- ISO9001: 2000 certification

Specifications: End Entry Side Entry Available pressure rating (psi) 250/300/450/1000

Length (No. of elements) 1 to 4

Shell Material FRP

Shell Color White (other colors are available on request)

Feed/reject port

Size 0.5"0.75" 0.5"/0.75"/1"

Connection Female NPT/BSP Groove

Material ABS S304 (SS 316 for 1000 psi)

Permeate port

Size 0.5"

Connection Female NPT/BSP

Material ABS Standard (Stainless steel option)

Head assembly\*1 Included

Adaptor\*2 N/A included

Straps and saddles included

Packaging PVC plastic wrapping with carton outer pack

Max. operating Temp 50°C (122°F)

Note: \*1- Head assembly consists of half moon lock plates, ABS seal plate and lock nut, Head seal, permeate port o-ring. (cast Aluminum bearing plate only used in 1000 psi vessel) \*2 – 0.75" OD

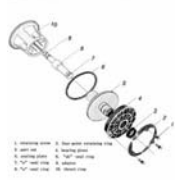
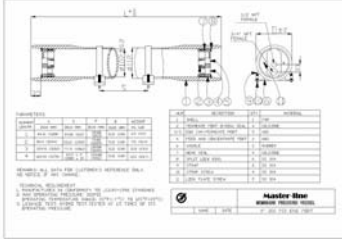
standard adaptor is provided for side entry vessel. Adaptors of different dimension are available on request.

All specifications mentioned above are subject to change without prior notice Other

| Item-Nr:        | Description:   |
|-----------------|--|
| MVN4040S03001MN | FRP Membrane vessel 4040 NE4-V2 Series - Side Port 180° - 300 PSI - 1 element  |
| MVN4040S03002MN | FRP Membrane vessel 4040 NE4-V2 Series - Side Port 180° - 300 PSI - 2 elements |
| MVN4040S03003MN | FRP Membrane vessel 4040 NE4-V2 Series - Side Port 180° - 300 PSI - 3 elements |
| MVN4040S03004MN | FRP Membrane vessel 4040 NE4-V2 Series - Side Port 180° - 300 PSI - 4 elements |
| MVNE4300SPACC   | Spare parts and accessories ML NE4-V2 on request                               |

**4" FRP MEMBRANE HOUSINGS ML NE4-V2 1200 PSI SIDE PORT**

**4" ML"NE4-V2" SIDE PORT 1200 PSI Series Pressure Membrane Housings**



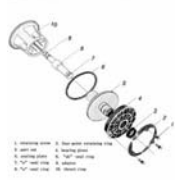
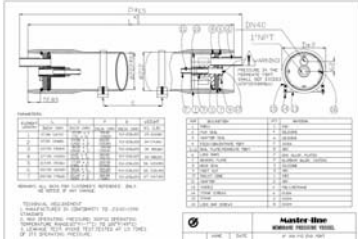
FRP 1200 PSI model for application with pressure up to 1200 psi and 1 to 4 membrane elements. ML NE2-V1 Series - 4", Side Port - Pressure (psi) : 1200, Length: 21"and 40" single leement - Master-Line NE2-V2 series is specially designed for membranes separation applications such as pure water production. Master Line implements in-house program to assure quality product quality meets specification.  
 Features: - Smooth inner surface finishing for easy loading and unloading of membrane elements - Side Port connection - Outer UV resistant polyurethane paint - Single head assembly to cut down spare parts cost - ISO9001: 2000 certification

Specifications: End Entry Side Entry Available pressure rating (psi) 250/300/450/1000  
 Length (No. of elements) 1 to 4  
 Shell Material FRP  
 Shell Color White (other colors are available on request)  
 Feed/reject port  
 Size 0.5"0.75" 0.5"/0.75"/1"  
 Connection Female NPT/BSP Groove  
 Material ABS S304 (SS 316 for 1000 psi)  
 Permeate port  
 Size 0.5"  
 Connection Female NPT/BSP  
 Material ABS Standard (Stainless steel option)  
 Head assembly\*1 Included  
 Adaptor\*2 N/A included  
 Straps and saddles included  
 Packaging PVC plastic wrapping with carton outer pack  
 Max. operating Temp 50°C (122°F)  
 Note: \*1- Head assembly consists of half moon lock plates, ABS seal plate and lock nut, Head seal, permeate port o-ring. (cast Aluminum bearing plate only used in 1000 psi vessel) \*2 – 0.75" OD standard adaptor is provided for side entry vessel. Adaptors of different dimension are available on request.  
 All specifications mentioned above are subject to change without prior notice  
 Other

| Item-Nr:        | Description:  |
|-----------------|---|
| MVN4040S12001MN | FRP Membrane vessel 4040 NE4-V2 Series - Side Port 180° - 1200 PSI - 1 element (#)  |
| MVN4040S12002MN | FRP Membrane vessel 4040 NE4-V2 Series - Side Port 180° - 1200 PSI - 2 elements     |
| MVN4040S12003MN | FRP Membrane vessel 4040 NE4-V2 Series - Side Port 180° - 1200 PSI - 3 elements     |
| MVN4040S12004MN | FRP Membrane vessel 4040 NE4-V2 Series - Side Port 180° - 1200 PSI - 4 elements (#) |

**8" FRP MEMBRANE HOUSINGS ML NE8-V3 300 PSI END PORT**

**8" ML "NE8" 300 PSI END PORT Series 300 PSI Pressure Membrane Housings**



Master-Line NE8-V3 series membrane pressure vessel is available in both end entry and side entry configuration; pressure rating from 150 psi to 1200 psi and length from 1 through 7 membrane elements. Master-Line V-3 series is specially designed for membrane separation applications such as pure water production, wastewater treatment, water recycling and sea water desalination. The factory implements in house quality program to assure the product quality meets international standard such as ASME.

- Features: - Smooth inner surface finishing for easy loading and unloading of membrane elements
- Both end entry and side entry are available
- Different size of side port connection is available in Side entry vessels
- Outer polyurethane paint for VU resistant
- Head seal area is formed on the mandrel surface, therefore more accurate.
- The head seal is captured and does roll during installation of head assembly
- Down-stream conical shape thrust cone improve water flow pattern and allow installation of head assembly in any angle
- ISO9001:200 certification
- 100% hydro test at 1.5X operating pressure

Specifications: End Entry Side Entry Available pressure rating (psi) 150/250/300/450/600/800/1000/1200

Length (No. of elements) 1 to 7

Shell Material FRP

Shell Color White (other colors are available on request)

Feed/reject port

Size 1.5" /1.5"/2.0"/2.5"

Connection Groove end

Material SS316 (duplex SS for 1000 psi and above)

Permeate port

Size 1"

Connection Female NPT/BSP

Material ABS

Head assembly\*1 Included

Adaptor\*2 included

Straps and saddles included

Packaging\*3 PVC plastic wrapping with carton outer pack

Max. operating Temp 50°C (122°F)

Note: \*1- Head assembly consists of Retainer lock bars, cast Aluminum bearing plate, ABS seal plate and lock nut,

Head seal, permeate port o-ring. \*2 – 0.125" OD Standard adaptor is provided. Adaptors of different dimension are available on request. \*3"

wooden crate for export packing.

All specifications mentioned above are subject to change without prior notice

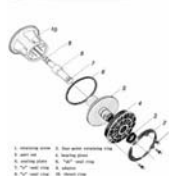
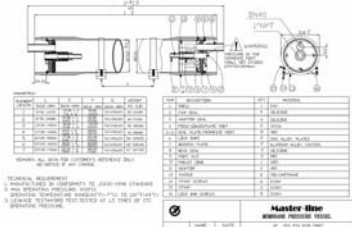
Other information such as ordering guide and sales drawings are available

| Item-Nr:        | Description:  |
|-----------------|---|
| MVN8040E03001MN | FRP Membrane vessel 8040 NE8 Series - End Port - 300 PSI - 1 element      |
| MVN8040E03002MN | FRP Membrane vessel 8040 NE8 Series - End Port - 300 PSI - 2 elements     |
| MVN8040E03003MN | FRP Membrane vessel 8040 NE8 Series - End Port - 300 PSI - 3 elements     |
| MVN8040E03004MN | FRP Membrane vessel 8040 NE8 Series - End Port - 300 PSI - 4 elements (#) |
| MVN8040E03005MN | FRP Membrane vessel 8040 NE8 Series - End Port - 300 PSI - 5 elements (#) |
| MVN8040E03006MN | FRP Membrane vessel 8040 NE8 Series - End Port - 300 PSI - 6 elements (#) |
| MVN8040E03007MN | FRP Membrane vessel 8040 NE8 Series - End Port - 300 PSI - 7 elements (#) |
| MVNE8300ACC     | Spare parts and accessories ML NE8-V3- on request                         |



## 8" FRP MEMBRANE HOUSINGS ML NE8-V3 450 PSI END PORT

## 8" ML "NE8" 450 END PORT PSI Series Pressure Membrane Housings



FRP 450 PSI model for application with pressure up to 450 psi and 1 to 8 membrane elements. Master-Line NE8-V3 series membrane pressure vessel is available in both end entry and side entry configuration; pressure rating from 150 psi to 1200 psi and length from 1 through 7 membrane elements.

Master-Line V-3 series is specially designed for membrane separation applications such as pure water production, wastewater treatment, water recycling and sea water desalination. The factory implements in house quality program to assure the product quality meets international standard such as ASME.

### Features:

- Smooth inner surface finishing for easy loading and unloading of membrane elements
- Both end entry and side entry are available
- Different size of side port connection is available in Side entry vessels
- Outer polyurethane paint for VU resistant
- Head seal area is formed on the mandrel surface, therefore more accurate.
- The head seal is captured and does roll during installation of head assembly
- Down-stream conical shape thrust cone improve water flow pattern and allow installation of head assembly in any angle
- ISO9001:200 certification
- 100% hydro test at 1.5X operating pressure

### Specifications: End Entry Side Entry

Available pressure rating (psi) 150/250/300/450/600/800/1000/1200

Length (No. of elements) 1 to 7

Shell Material FRP

Shell Color White (other colors are available on request)

Feed/reject port

Size 1.5" /1.5"/2.0"/2.5"

Connection Groove end

Material SS316 (duplex SS for 1000 psi and above)

Permeate port

Size 1"

Connection Female NPT/BSP

Material ABS

Head assembly\*1 Included

Adaptor\*2 included

Straps and saddles included

Packaging\*3 PVC plastic wrapping with carton outer pack

Max. operating Temp 50°C (122°F)

Note: \*1- Head assembly consists of Retainer lock bars, cast Aluminum bearing plate, ABS seal plate and lock nut,

Head seal, permeate port o-ring. \*2 – 0.125" OD Standard adaptor is provided. Adaptors of different dimension are available on request. \*3"

wooden crate for export packing.

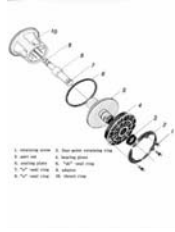
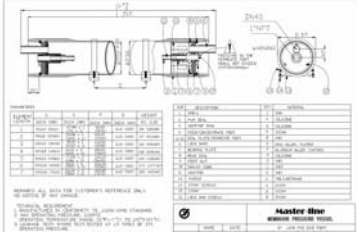
All specifications mentioned above are subject to change without prior notice

Other information such as ordering guide and sales drawings are available

| Item-Nr:        | Description:   |
|-----------------|--|
| MVN8040E04501MN | FRP Membrane vessel 8040 NE8 Series - End Port - 450 PSI - 1 element             |
| MVN8040E04502MN | FRP Membrane vessel 8040 NE8 Series - End Port - 450 PSI - 2 elements            |
| MVN8040E04503MN | FRP Membrane vessel 8040 NE8 Series - End Port - 450 PSI - 3 elements            |
| MVN8040E04504MN | FRP Membrane vessel 8040 NE8 Series - End Port - 450 PSI - 4 elements (#)        |
| MVN8040E04505MN | FRP Membrane vessel 8040 NE8 Series - End Port - 450 PSI - 5 elements (#)        |
| MVN8040E04506MN | FRP Membrane vessel 8040 NE8 Series - End Port - 450 PSI - 6 elements (#)        |
| MVN8040E04507MN | FRP Membrane vessel 8040 NE8 Series - End Port - 450 PSI - 7 elements (#)        |
| MVNE8450        | Further models End Port - Side Port - 300 to 1200 PSI 1 to 7 elements on request |
| MVNE8450ACC     | Spare parts and accessories ML NE8-V3- on request                                |

**8" FRP MEMBRANE HOUSINGS ML NE8-V3 1200 PSI END PORT**

**8" ML "NE8" 1200 PSI END PORT Series Pressure Membrane Housings**



FRP 1200 PSI model for application with pressure up to 450 psi and 1 to 8 membrane elements. Master-Line NE8-V3 series membrane pressure vessel is available in both end entry and side entry configuration; pressure rating from 150 psi to 1200 psi and length from 1 through 7 membrane elements.

Master-Line V-3 series is specially designed for membrane separation applications such as pure water production, wastewater treatment, water recycling and sea water desalination. The factory implements in house quality program to assure the product quality meets international standard such as ASME.

**Features:**

- Smooth inner surface finishing for easy loading and unloading of membrane elements
- Both end entry and side entry are available
- Different size of side port connection is available in Side entry vessels
- Outer polyurethane paint for VU resistant
- Head seal area is formed on the mandrel surface, therefore more accurate.
- The head seal is captured and does roll during installation of head assembly
- Down-stream conical shape thrust cone improve water flow pattern and allow installation of head assembly in any angle
- ISO9001:200 certification
- 100% hydro test at 1.5X operating pressure

**Specifications:** End Entry Side Entry  
 Available pressure rating (psi) 150/250/300/450/600/800/1000/1200  
 Length (No. of elements) 1 to 7  
 Shell Material FRP  
 Shell Color White (other colors are available on request)  
 Feed/reject port  
 Size 1.5" /1.5"/2.0"/2.5"  
 Connection Groove end  
 Material SS316 (duplex SS for 1000 psi and above)  
 Permeate port  
 Size 1"  
 Connection Female NPT/BSP  
 Material ABS  
 Head assembly\*1 Included  
 Adaptor\*2 included  
 Straps and saddles included  
 Packaging\*3 PVC plastic wrapping with carton outer pack  
 Max. operating Temp 50°C (122°F)  
 Note: \*1- Head assembly consists of Retainer lock bars, cast Aluminum bearing plate, ABS seal plate and lock nut, Head seal, permeate port o-ring. \*2 – 0.125" OD Standard adaptor is provided. Adaptors of different dimension are available on request. \*3" wooden crate for export packing.  
 All specifications mentioned above are subject to change without prior notice  
 Other information such as ordering guide and sales drawings are available

| Item-Nr:        | Description:   |
|-----------------|--|
| MVN8040E12002MN | FRP Membrane vessel 8040 NE8 Series - End Port - 1200 PSI - 2 elements |
| MVN8040E12003MN | FRP Membrane vessel 8040 NE8 Series - End Port - 1200 PSI - 2 elements |

## STAINLESS STEEL MEMBRANE HOUSINGS

### SS VESSEL

### Pressure Membrane Housings in stainless steel



PRICE ON REQUEST

| Item-Nr:      | Description:   |
|---------------|--|
| VS40211AS0425 | RO Membrane vessel in 4021 1A in stainless steel AISI 304 250 psi                                      |
| VS40401AS0425 | RO Membrane vessel in 4040 1A in stainless steel AISI 304 250 psi                                      |
| VS40402AS0425 | RO Membrane vessel in 4040 2A in stainless steel AISI 304 250 psi                                      |
| VSSVESSEK     | RO Membrane vessel in stainless steel AISI 304 - for remaining dimensions and rating prices on request |